

ROTOWORX

FINISHING SOLUTION

DIGITAL FINISHING EQUIPMENT

Rotoworx 330



GONDERFLEX INTERNATIONAL INC.
FLEXO PRINTING-CONVERTING EQUIPMENT

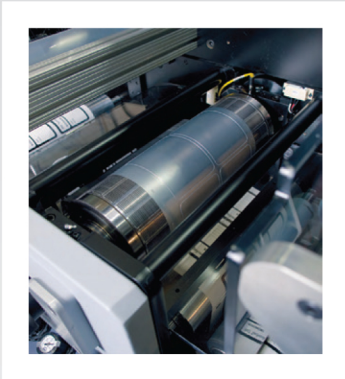


ROTOWORX 330

Semi-rotary converting system

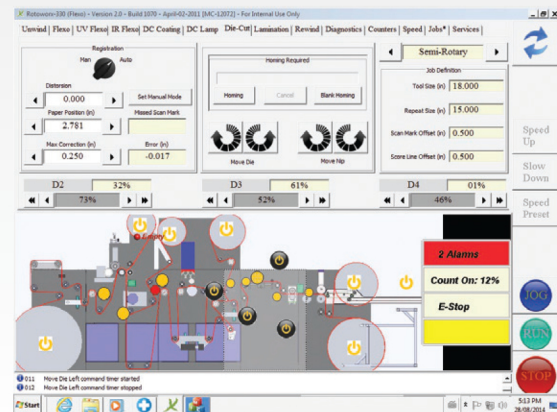
The Rotoworx 330 product range is an economic, stand-alone, modular converting and finishing solution designed to make short-run label conversion and finishing less costly. It is complete with product unwind, semi-rotary die-cut, flexo coating station, lamination, matrix rewind and two product rewind modules. It has a maximum web-width of 330 mm (13 in.) and an operating speed going up to 50 m/min (~160 fpm).

The Rotoworx 330 has been specifically designed with efficient and cost effective short run operation in mind. The extremely small footprint - 3.5 m² (37 sq.ft.) - and the short web path - 3.5 m (11.5 ft.) - in combination with a homing cycle and on/off impression die station results in minimal waste during job changeovers and roll splices. Re-registration is possible within one or two repeats.



Semi-Rotary Die Station

The semi-rotary die-station is complete with sensing technology to electronically re-register to incoming pre-printed material. It uses a magnetic cylinder and flex tooling to facilitate fast changeovers and reduced tooling costs. The die tool anvil system is equipped with an off impression mode to reduce waste during changeovers and make ready.



Variable Repeat Flexographic Station

Benefiting from our 30+ years experience in the printing press manufacturing business, we've integrated an ingeniously designed flexographic module into the Rotoworx system in order to provide our users the versatility and cost-effectiveness of flexography in conjunction with semi-rotary die cutting. The unit is suitable for performing 1-color or multiple printing stations, spot UV varnish, in register cold foiling as well as full coverage UV varnish coating. Equipped with a UV and optional IR dryer along with our reservoir blade and pan system, doctor blade and ink pan system, this crucial add-on offers you the ruggedness, reliability and ease of operation that our customers have to expect from Gonderflex products.

Distortion Compensating Software

Re-toll for die-cutting will make the difference between a profitable job and an unprofitable one. With this in mind, Rotoworx's proprietary distortion compensating software aims to cutback these expenses that every printer operating in the digital printing market must deal with. This new revolutionary software is designed to maximise the use of your preexisting flexible dies by allowing their use on the Rotoworx's magnetic cylinder. In essence, a full-rotary flexible die purchased for your other presses may be placed directly in the Rotoworx. From this point, simply entering the die's specifications into the intuitive job manager interface will compensate its distortion requirement, making it usable and cost conscious profitability.

ISO-Tensioning System (Patented)

The system features a field-proven web transport based on Rotoworx's patented ISO Tensioning technology with high registration accuracy of +/- 180 microns (0.007 in.) and a repeat size from 203 mm (8 in.) to 559 mm (22 in.). Tensioning for each module is isolated and controlled independently allowing the use of different tensions for different processes. This is particularly useful when running sensitive films, difficult matrixes or when through cutting.

Graphic User Interface and Remote Diagnostics

A self explanatory password protected graphic interface with representation of the machine facilitates the input of all necessary run parameters and settings. The operating manual, trouble shooting guide and diagnostics are all accessible via this touch screen. The machine can also be ran and diagnosed remotely via secure internet based connection.

Tecnical Data

General Specifications

Speed:

Maximum mechanical speed of 250 ft/min (76 m/min) in rewinding/coating mode.
Maximum operating speed of 160 ft/min (50 m/min) in semi rotary mode.

Unwind capacity:

760 mm (30 in.)

Web width:

Minimum of 50 mm (2 in.)
Maximum of 343 mm (13.5 in.)

Die Cutting Repeat Size:

203 mm (8 in.) to 559 mm (22 in.)

Flexo Module Repeat Size:

610 mm (24 in.)

Lamination:

Top side lamination 510 mm (20 in.) capacity

Die Cut:

Semi-rotary die cutting +/- 180 µ (0.007 in.) registration accuracy

Slitting Module:

Underscore
Crush slitter

Rewind:

Dual product rewind 610 mm (24 in.) capacity each
Matrix rewind 610 mm (24 in.)

User interface:

Self-explanatory, touch screen, all controls centralized

Support Service:

Remote operated and diagnostics via secure internet connection.

Options

100% Modular Equipment :

Any optional module can be integrated in a specific configuration to meet your requirements.

- Corona treatment unit either single side or double side
- Contact web cleaner either single side or double side
- Flexo coating station with UV or IR hot air dryer
- Flexo printing or spot coating station in register with printing and UV or IR hot air dryer
- Cold foil attachment for flexo print unit
- Shear Slitting
- Razor Blade Slitting
- Full rotary die cutting station in register with printing
- Shingling conveyor with carry cart and counter
- Rotary screen unit with UV dryer in register with printing
- Flat screen unit with UV dryer in register with printing
- Flat bed hot stamping
- Flat bed die cutting unit in register with printing
- Visual inspection camera
- 100% inspection camera system
- Rotary hot stamping
- Digital mono color ink jet print head
- Roll loading/unloading cart for unwind and rewind
- Pneumatic roll loader for unwind stand

Image may be different from actual product.



GONDERFLEX INTERNATIONAL INC.

FLEXO PRINTING-CONVERTING EQUIPMENT

530, Guimond Boul.
Longueuil (Québec) J4G 1P8
Canada

Telephone: +1 450.651.2224
Fax : +1 450.651.2032
info@gonderflex.com

WWW.GONDERFLEX.COM

ROTOWORX

FINISHING SOLUTION